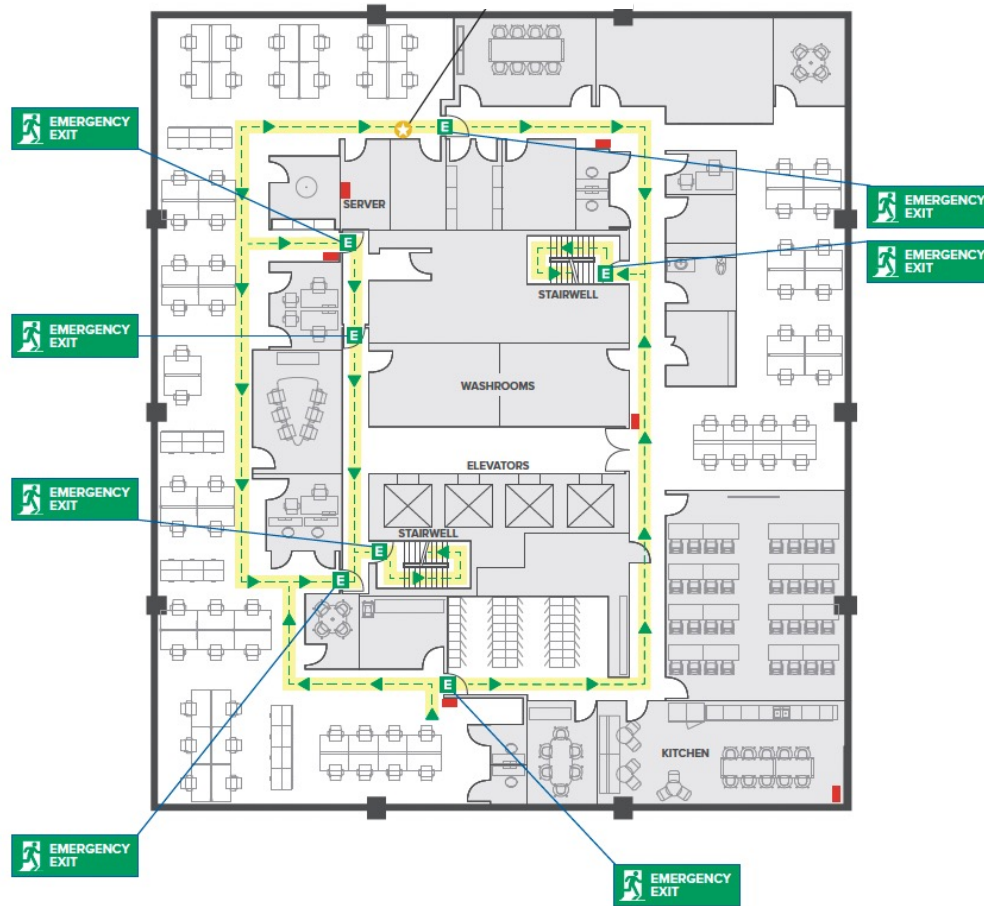


EVACUATION PLAN

ALTIUS CENTRE: 500 4TH AVE SW, CALGARY AB T2P 2V6

7TH FLOOR



E Emergency Exit Door

■ Fire Extinguisher

-> Exit Plan

IN EMERGENCY DIAL: 911

IN CASE OF EMERGENCY DO NOT USE ELEVATOR. USE EXIT STAIRS.

PERSONS WITH DISABILITIES: Call 911, report their location, proceed to the nearest stairwell and await assistance.

ALTIUS CENTRE

500 4 AVENUE SW & 503 3 AVENUE SW,
CALGARY, ALBERTA

FIRE EVACUATION PLAN

